

---

# FENWICK SOLAR FARM

**Fenwick Solar Farm**  
**EN010152**

**Framework Construction Traffic Management Plan**

**Part 2 of 2**

**Document Reference: EN010152/APP/7.17**

Regulation 5(2)(a)

Infrastructure Planning (Applications: Prescribed Forms and Procedure)  
Regulations 2009

October 2024  
Revision Number: 00

## Revision History

<b>Revision Number</b>	<b>Date</b>	<b>Details</b>
00	October 2024	DCO application

Prepared for:  
Fenwick Solar Project Limited

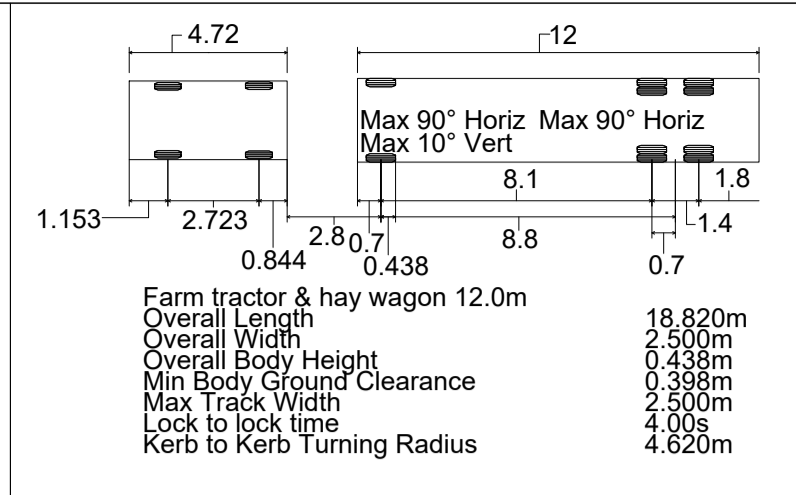
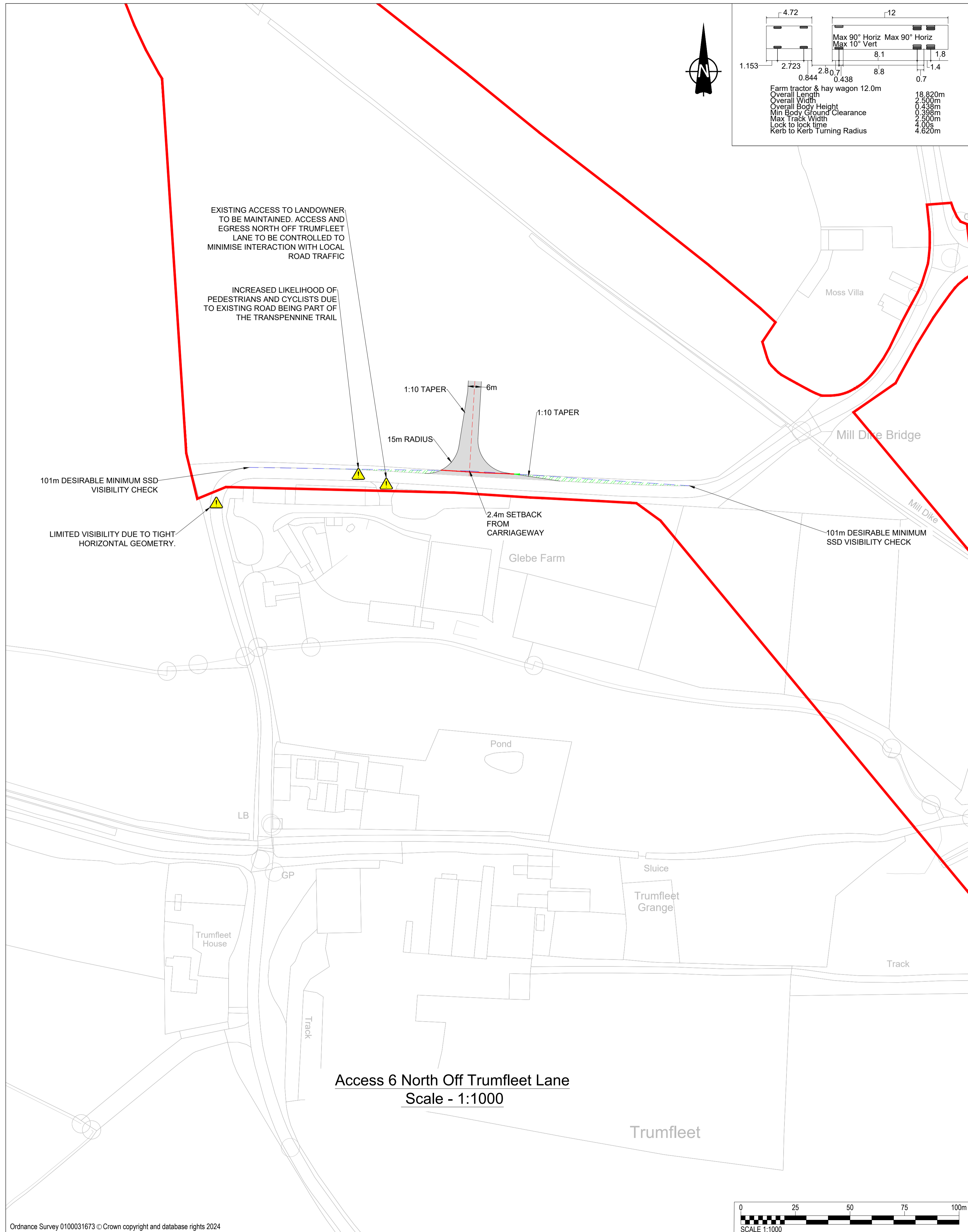
Prepared by:  
AECOM Limited

© 2024 AECOM Limited. All Rights Reserved.

This document has been prepared by AECOM Limited (“AECOM”) for sole use of our client (the “Client”) in accordance with generally accepted consultancy principles, the budget for fees and the terms of reference agreed between AECOM and the Client. Any information provided by third parties and referred to herein has not been checked or verified by AECOM, unless otherwise expressly stated in the document. No third party may rely upon this document without the prior and express written agreement of AECOM.

# **Annex A Proposed Access Layouts, Visibility Splays and Swept Paths**

## **Access 6 to 13**



**PROJECT**

Fenwick Solar Farm

**CLIENT**

Fenwick Solar Project Limited

**CONSULTANT**

AECOM  
 Saxon House, 27 Duke Street  
 Chelmsford, Essex, CM1 1HT  
 01245 771200 tel 01245 476121 fax  
 www.aecom.com

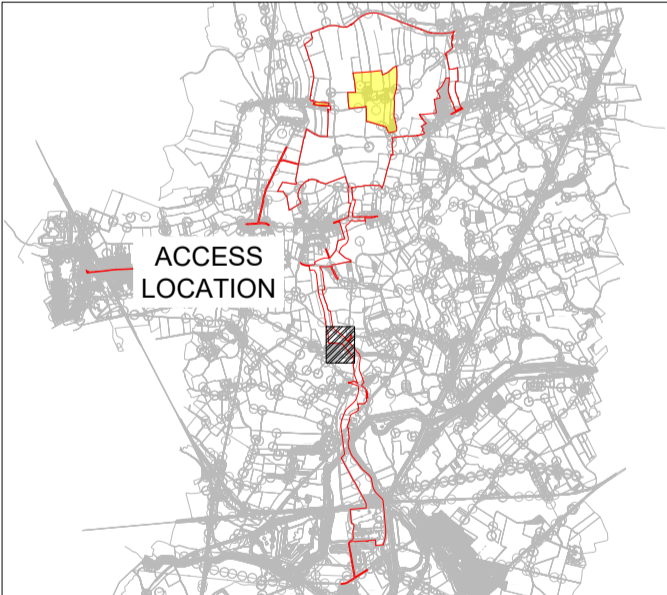
**GENERAL NOTES**

1. This drawing is to be read in conjunction with all other relevant documentation.
2. Do not scale from this drawing, use only printed dimensions.
3. All dimensions in metres, all chainages, levels and coordinates are in meters unless defined otherwise.
4. This Drawing is to be read in conjunction with the project health & Safety File for any identified potential risks.
5. Vegetation to be removed denotes any vegetation features (such as hedgerows) that need to be removed to provide the required junction visibility. Any verge grassland is not to be removed but managed by the relevant maintainer to a low height so as to not impact upon junction visibility.
6. Junction visibility for the access is based upon visibility parameters derived using 85th percentile speed survey received on the 20th March 2024.

**KEY**

- Extent of Access Footprint
- Order limits
- Existing Public Rights of Way
- Vehicle body
- Vehicle body path
- Vehicle load
- Vehicle load path
- Vehicle wheels path
- Edge of road
- Land not included in the Order Limits
- Junction Visibility
- Vegetation Management for Vis splay
- Hedgerow Removal for Vis Splay
- Hedgerow Removal for Bellmouth Access

**SHEET PLAN**



**ISSUE/REVISION**

NO	DATE	DESCRIPTION
P02	11/10/2024	DCO Issue
P01	02/05/2024	FIRST VERSION
I/R	DATE	DESCRIPTION

**PROJECT NUMBER**

60698207

**SHEET TITLE**

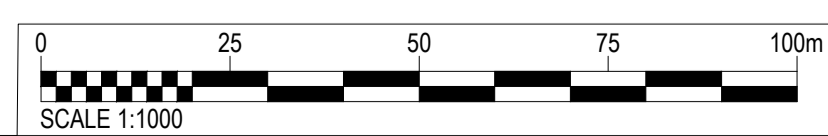
ACCESS 6 NORTH OFF TRUMFLEET LANE LAYOUT AND SWEEP PATH ANALYSIS

**SHEET NUMBER**

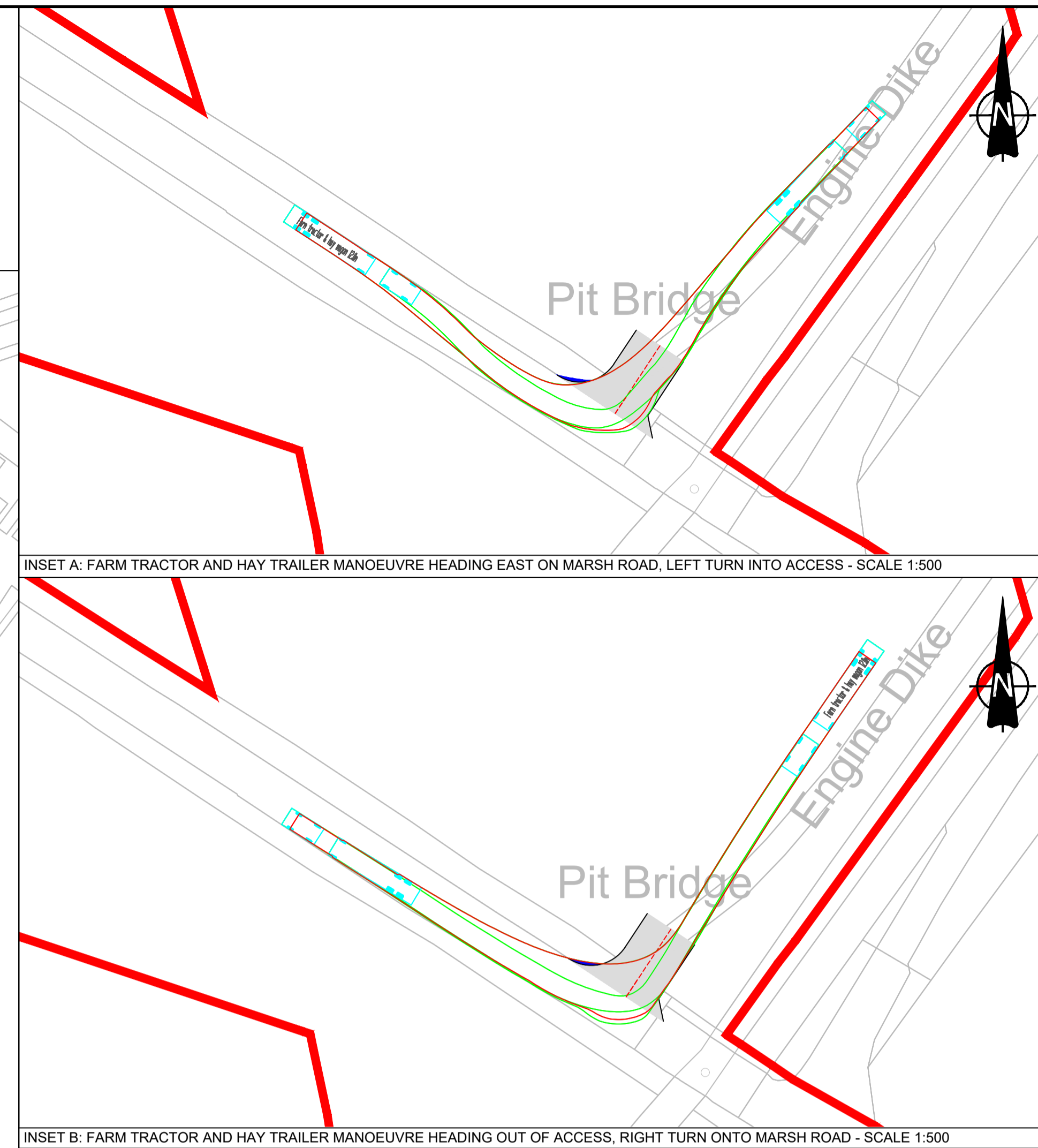
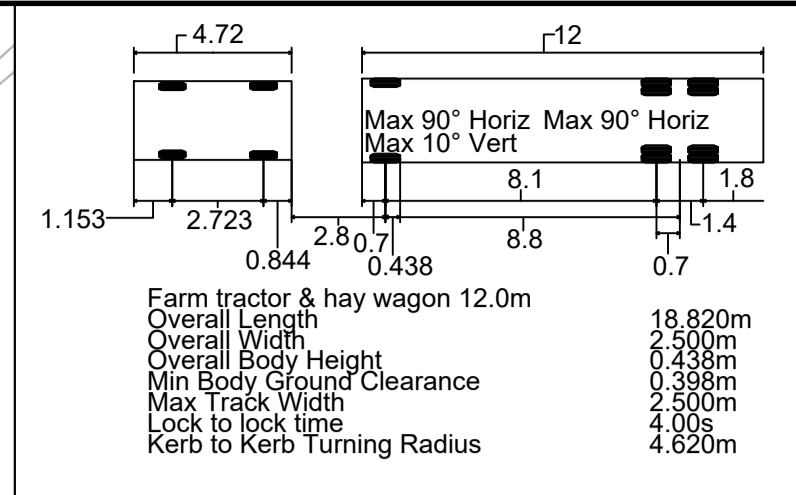
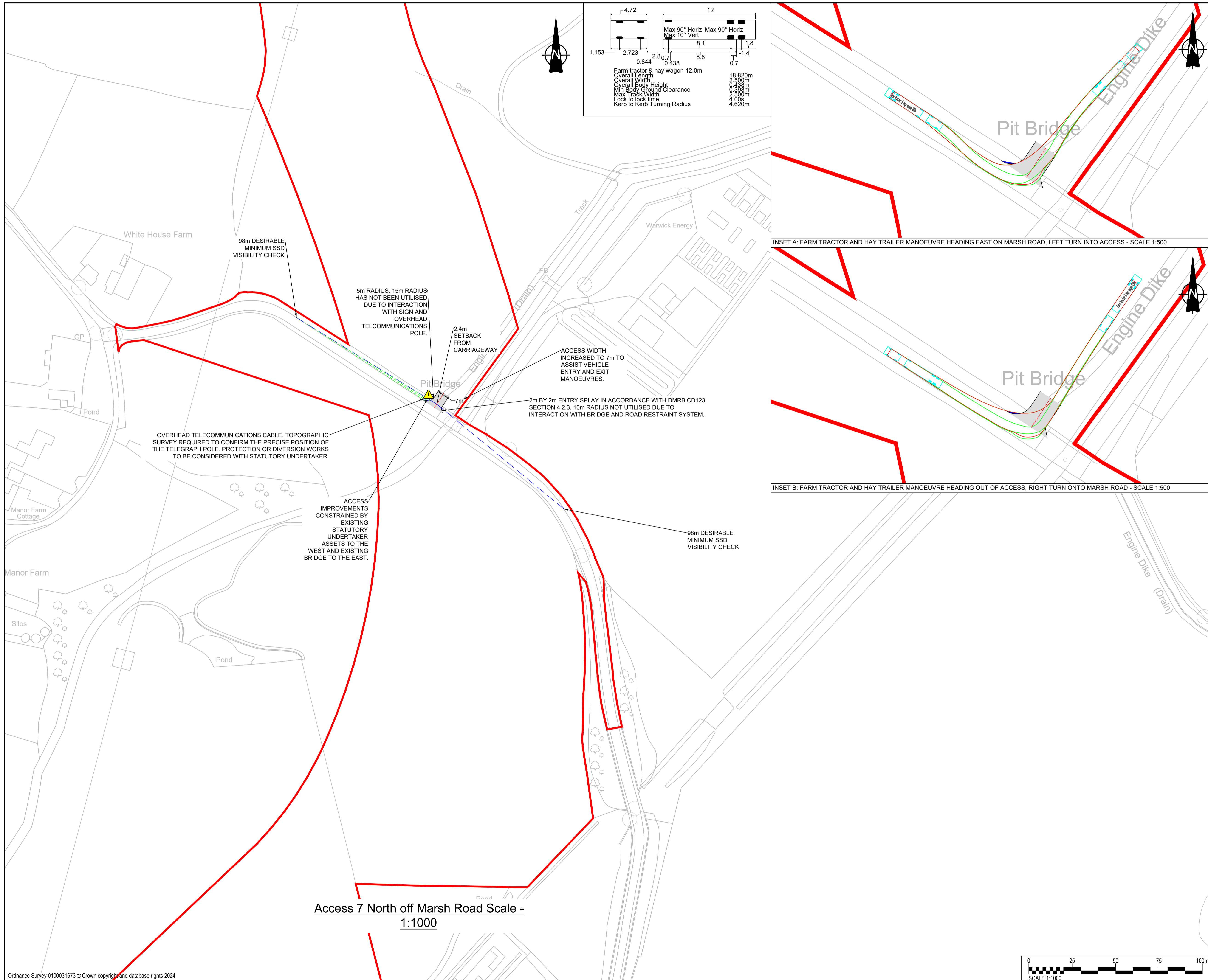
60698207-ACM-HGN-00-DR-CE-1006

This drawing has been prepared for the use of AECOM's client. It may not be used, modified, reproduced or relied upon by third parties, except as agreed by AECOM or as required by law. AECOM accepts no responsibility, and denies any liability whatsoever, to any party that uses or relies on this drawing without AECOM's express written consent. Do not scale this document.

Access 6 North Off Trumfleet Lane  
 Scale - 1:1000



Last saved by: JAMES.HEMINGWAY(2024-10-15) Last Picked: 2024-10-16  
 Filename: C:\USERS\JAMES.HEMINGWAY\ONE-DRIVE - AECOM\GENERAL - 60698207 FENWICK SOLAR FARM\900\_CAD\_GIS\910\_CAD\HIGHWAYS TEAM\DRAWINGS (CAD)\60698207-ACM-HGN-00-DR-CE-1007.DWG  
 Project Management Initials: Designer: KP Checked: CT Approved: JCH ISO A1 594mm x 841mm



**PROJECT**

Fenwick Solar Farm

**CLIENT**

Fenwick Solar Project Limited

**CONSULTANT**

AECOM  
 Saxon House, 27 Duke Street  
 Chelmsford, Essex, CM1 1HT  
 01245 771200 tel 01245 476121 fax  
 www.aecom.com

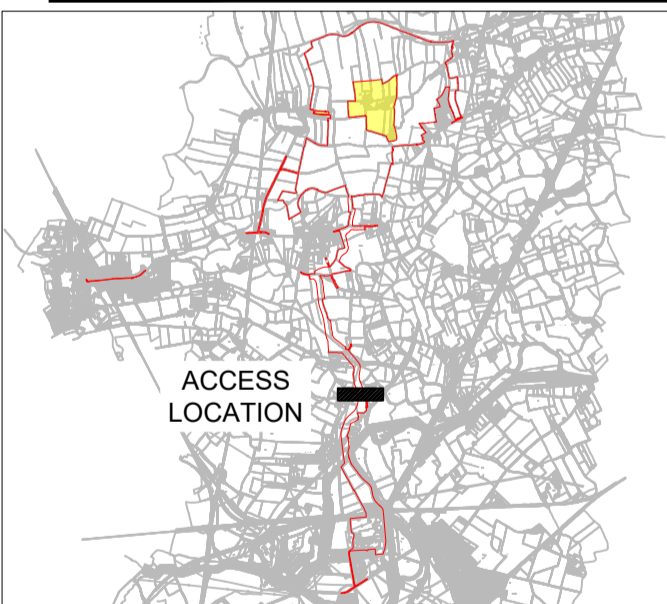
**GENERAL NOTES**

1. This drawing is to be read in conjunction with all other relevant documentation.
2. Do not scale from this drawing, use only printed dimensions.
3. All dimensions in meters, all chainages, levels and coordinates are in meters unless defined otherwise.
4. This Drawing is to be read in conjunction with the project health & Safety File for any identified potential risks.
5. Vegetation to be removed denotes any vegetation features (such as hedgerows) that need to be removed to provide the required junction visibility. Any verge grassland is not to be removed but managed by the relevant maintainer to a low height so as to not impact upon junction visibility.
6. Junction visibility for the access is based upon visibility parameters derived using 85th percentile speed survey received on the 20th March 2024.

**KEY**

- Extent of Access Footprint
- Order limits
- Existing Public Rights of Way
- Vehicle body
- Vehicle body path
- Vehicle load
- Vehicle load path
- Vehicle wheels path
- Edge of road
- Land not included in the Order Limits
- Junction Visibility
- Vegetation Management for Vis splay
- Hedgerow Removal for Vis Splay
- Hedgerow Removal for Bellmouth Access
- Verge Protection Mats

**SHEET PLAN**



**ISSUE/REVISION**

NO	DATE	DESCRIPTION
P02	11/10/2024	DCO Issue
P01	4/06/2024	FIRST VERSION
I/R	DATE	DESCRIPTION

**PROJECT NUMBER**

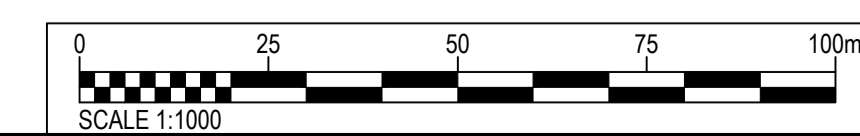
60698207

**SHEET TITLE**

ACCESS 7 NORTH OFF MARSH ROAD  
 LANE LAYOUT AND SWEEP PATH  
 ANALYSIS

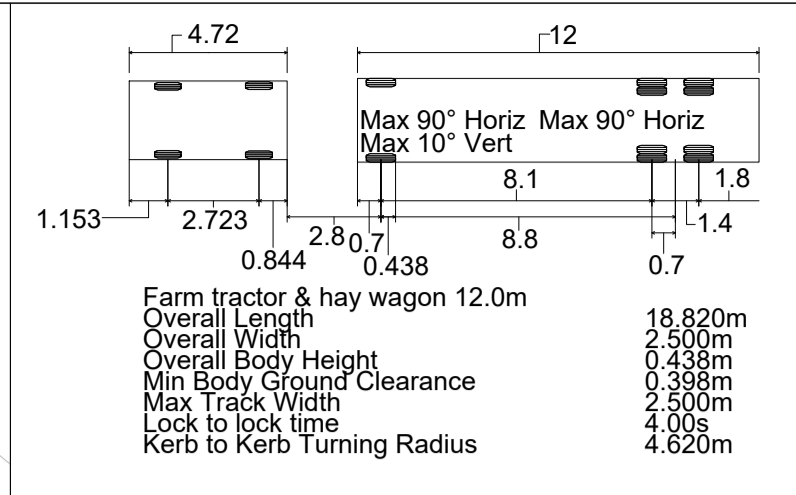
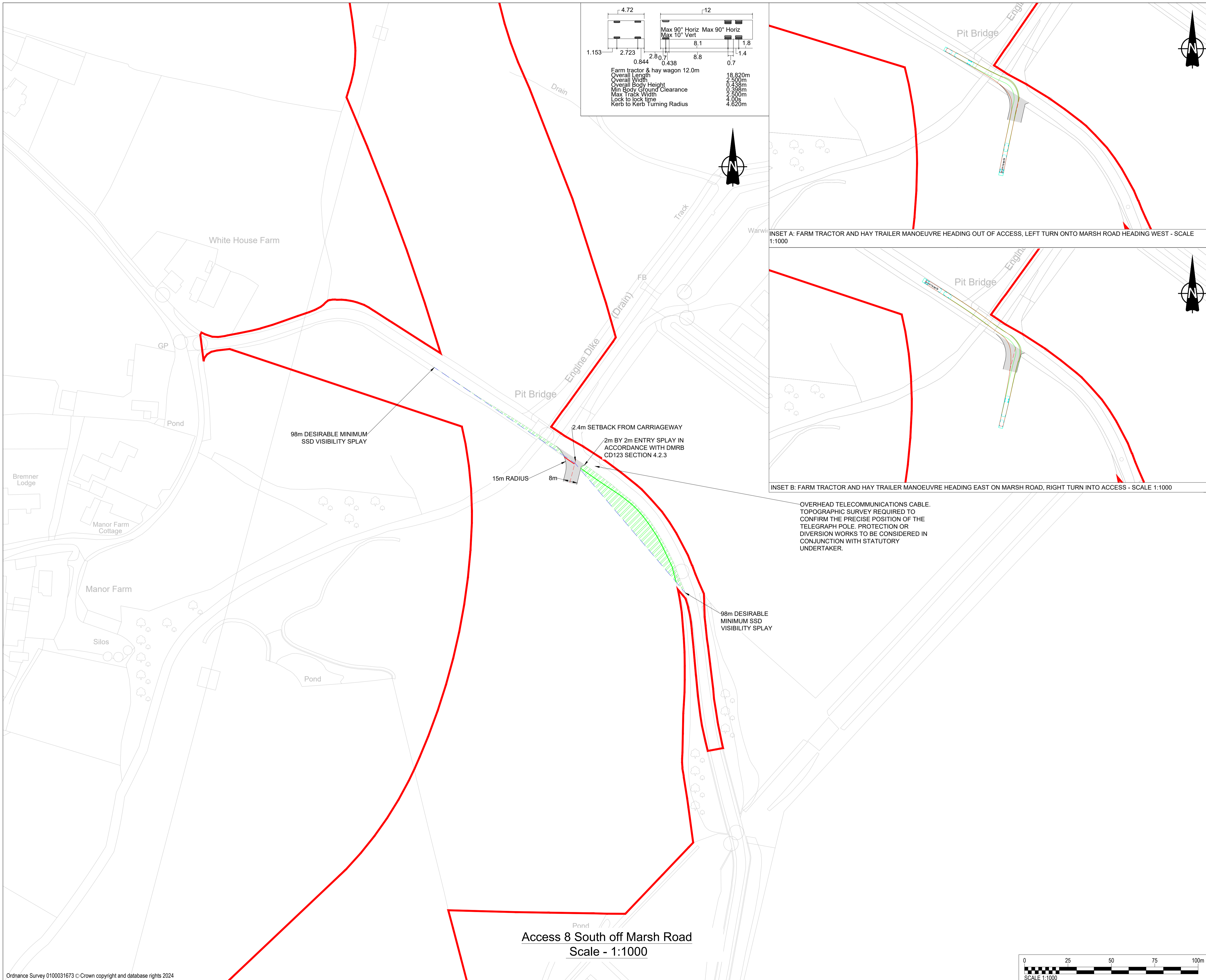
**SHEET NUMBER**

60698207-ACM-HGN-00-DR-CE-1007



This drawing has been prepared for the use of AECOM's client. It may not be used, modified, reproduced or relied upon by third parties, except as agreed by AECOM or as required by law. AECOM accepts no responsibility, and denies any liability whatsoever, to any party that uses or relies on this drawing without AECOM's express written consent. Do not scale this document.

ISO A1 594mm x 841mm  
 Approved: JCH  
 Checked: CT  
 Designer: KP  
 Project Management Initials:  
 Last saved by: KYLE PLACKETT(2024-10-15) Last Plotted: 2024-10-15  
 Filename: C:\USERS\KYLE PLACKETT\AECOM\60698207\FENWICK SOLAR FARM - GENERAL\900\_CAD\_GIS\910\_CAD\HIGHWAYS TEAM\DRAWINGS (CAD)\60698207-ACM-HGN-00-DR-CE-1008.DWG

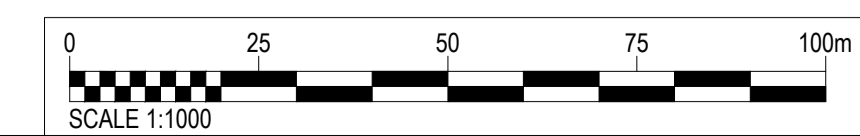


INSET A: FARM TRACTOR AND HAY TRAILER MANOEUVRE HEADING OUT OF ACCESS, LEFT TURN ONTO MARSH ROAD HEADING WEST - SCALE 1:1000

INSET B: FARM TRACTOR AND HAY TRAILER MANOEUVRE HEADING EAST ON MARSH ROAD, RIGHT TURN INTO ACCESS - SCALE 1:1000

OVERHEAD TELECOMMUNICATIONS CABLE. TOPOGRAPHIC SURVEY REQUIRED TO CONFIRM THE PRECISE POSITION OF THE TELEGRAPH POLE. PROTECTION OR DIVERSION WORKS TO BE CONSIDERED IN CONJUNCTION WITH STATUTORY UNDERTAKER.

Access 8 South off Marsh Road  
 Scale - 1:1000



**PROJECT**

Fenwick Solar Farm

**CLIENT**

Fenwick Solar Project Limited

**CONSULTANT**

AECOM  
 Saxon House, 27 Duke Street  
 Chelmsford, Essex, CM1 1HT  
 01245 771200 tel 01245 476121 fax  
 www.aecom.com

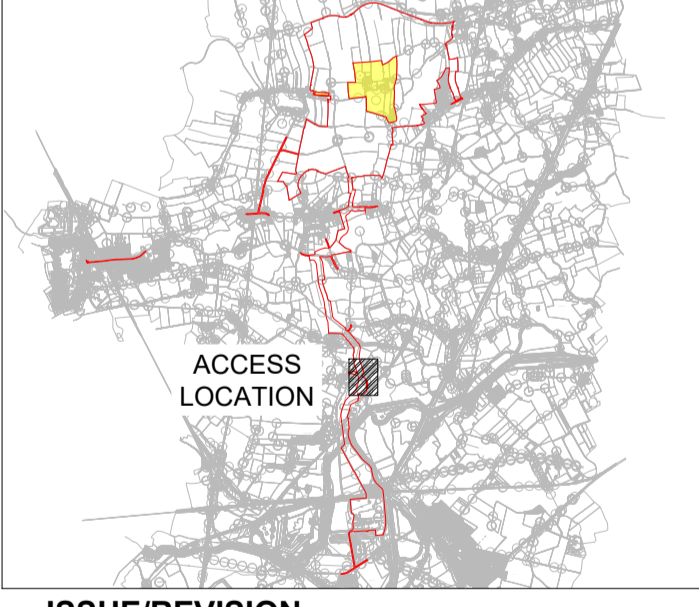
**GENERAL NOTES**

1. This drawing is to be read in conjunction with all other relevant documentation.
2. Do not scale from this drawing, use only printed dimensions.
3. All dimensions in meters, all chainages, levels and coordinates are in meters unless defined otherwise
4. This Drawing is to be read in conjunction with the project health & Safety File for any identified potential risks.
5. Vegetation to be removed denotes any vegetation features (such as hedgerows) that need to be removed to provide the required junction visibility. Any verge grassland is not to be removed but managed by the relevant maintainer to a low height so as to not impact upon junction visibility.
6. Junction visibility for the access is based upon visibility parameters derived using 85th percentile speed survey received on the 20th March 2024.

**KEY**

- Extent of Access Footprint
- Order limits
- Existing Public Rights of Way
- Vehicle body
- Vehicle body path
- Vehicle load
- Vehicle load path
- Vehicle wheels path
- Edge of road
- Land not included in the Order Limits
- Junction Visibility
- Vegetation Management for Vis splay
- Hedgerow Removal for Vis Splay
- Hedgerow Removal for Bellmouth Access

**SHEET PLAN**



**ISSUE/REVISION**

NO	DATE	DESCRIPTION
P02	11/10/2024	DCO Issue
P01	02/05/2024	FIRST VERSION
I/R	DATE	DESCRIPTION

**PROJECT NUMBER**

60698207

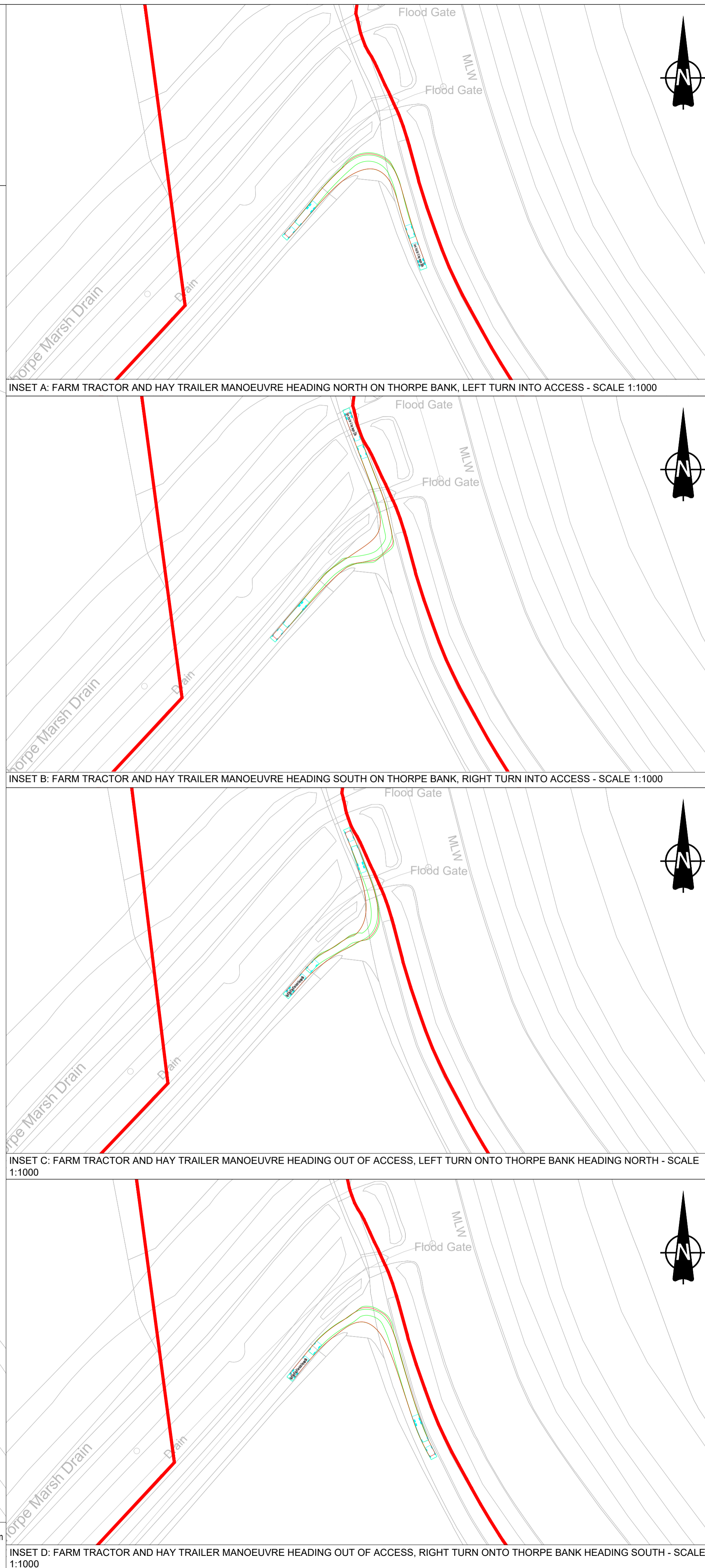
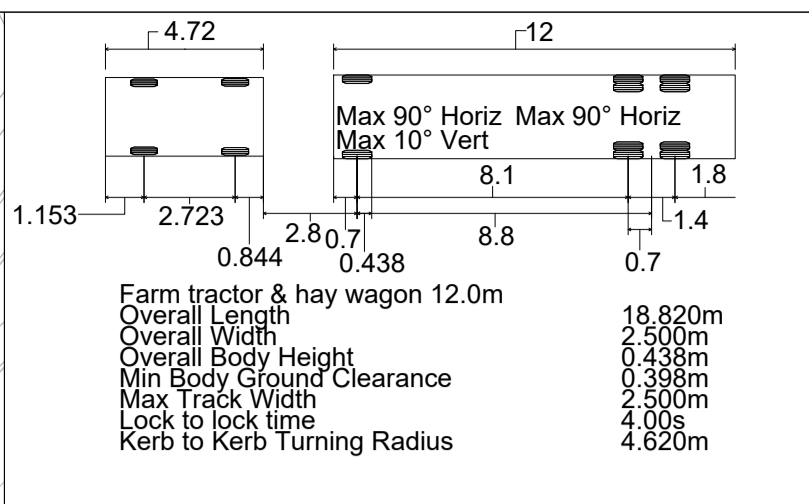
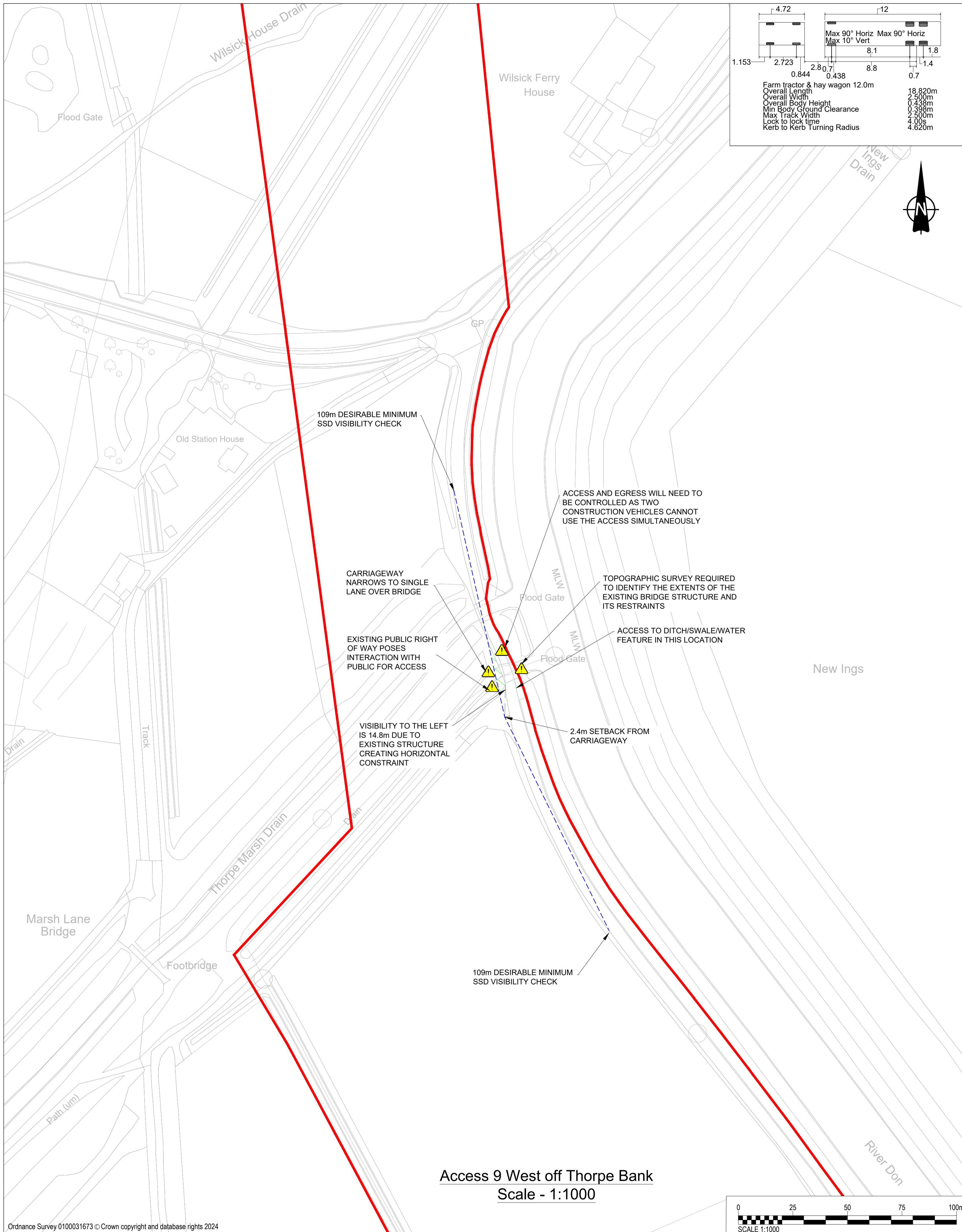
**SHEET TITLE**

ACCESS 8 SOUTH OFF MARSH ROAD LAYOUT AND SWEEP PATH ANALYSIS

**SHEET NUMBER**

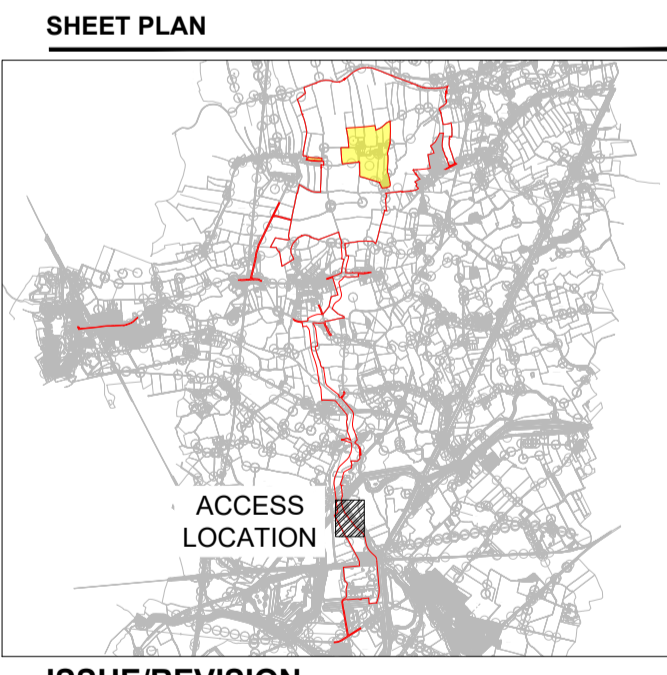
60698207-ACM-HGN-00-DR-CE-1008

This drawing has been prepared for the use of AECOM's client. It may not be used, modified, reproduced or relied upon by third parties, except as agreed by AECOM or as required by law. AECOM accepts no responsibility, and denies any liability whatsoever, to any party that uses or relies on this drawing without AECOM's express written consent. Do not scale this document.



- GENERAL NOTES**
- This drawing is to be read in conjunction with all other relevant documentation. Do not scale from this drawing, use only printed dimensions.
  - All dimensions in meters, all chainages, levels and coordinates are in meters unless defined otherwise.
  - This Drawing is to be read in conjunction with the project health & Safety File for any identified potential risks.
  - Vegetation to be removed denotes any vegetation features (such as hedgerows) that need to be removed to provide the required junction visibility. Any verge grassland is not to be removed but managed by the relevant maintainer to a low height so as to not impact upon junction visibility.
  - Junction visibility for the access is based upon visibility parameters derived using 85th percentile speed survey received on the 20th March 2024.

- KEY**
- Extent of Access Footprint
  - Order limits
  - Existing Public Rights of Way
  - Vehicle body
  - Vehicle body path
  - Vehicle load
  - Vehicle load path
  - Vehicle wheels path
  - Edge of road
  - Land not included in the Order Limits
  - Junction Visibility
  - Vegetation Management for Vis splay
  - Hedgerow Removal for Vis Splay
  - Hedgerow Removal for Bellmouth Access



**ISSUE/REVISION**

NO	DATE	DESCRIPTION
P02	11/10/2024	DCO Issue
P01	06/06/2024	FIRST VERSION
I/R	DATE	DESCRIPTION

This drawing has been prepared for the use of AECOM's client. It may not be used, modified, reproduced or relied upon by third parties, except as agreed by AECOM or as required by law. AECOM accepts no responsibility, and denies any liability whatsoever, to any party that uses or relies on this drawing without AECOM's express written consent. Do not scale this document.

**PROJECT**

Fenwick Solar Farm

**CLIENT**

Fenwick Solar Project Limited

**CONSULTANT**

AECOM  
 Saxon House, 27 Duke Street  
 Chelmsford, Essex, CM1 1HT  
 01245 771200 tel 01245 476121 fax  
 www.aecom.com

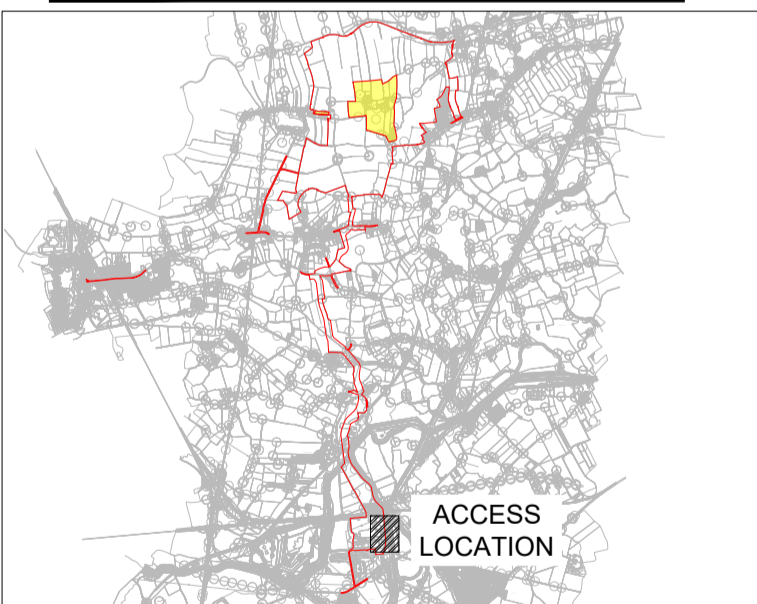
**GENERAL NOTES**

1. This drawing is to be read in conjunction with all other relevant documentation.
2. Do not scale from this drawing, use only printed dimensions.
3. All dimensions in meters, all chainages, levels and coordinates are in meters unless defined otherwise
4. This Drawing is to be read in conjunction with the project health & Safety File for any identified potential risks.
5. Vegetation to be removed denotes any vegetation features (such as hedgerows) that need to be removed to provide the required junction visibility. Any verge grassland is not to be removed but managed by the relevant maintainer to a low height so as to not impact upon junction visibility.
6. Junction visibility for the access is based upon visibility parameters derived using 85th percentile speed survey received on the 20th March 2024.

**KEY**

- Extent of Access Footprint
- Order limits
- Existing Public Rights of Way
- Vehicle body
- Vehicle body path
- Vehicle load
- Vehicle load path
- Vehicle wheels path
- Edge of road
- Land not included in the Order Limits
- Junction Visibility
- Vegetation Management for Vis splay
- Hedgerow Removal for Vis Splay
- Hedgerow Removal for Bellmouth Access

**SHEET PLAN**



**ISSUE/REVISION**

NO	DATE	DESCRIPTION
P02	11/10/2024	DCO Issue
P01	02/05/2024	FIRST VERSION
I/R	DATE	DESCRIPTION

**PROJECT NUMBER**

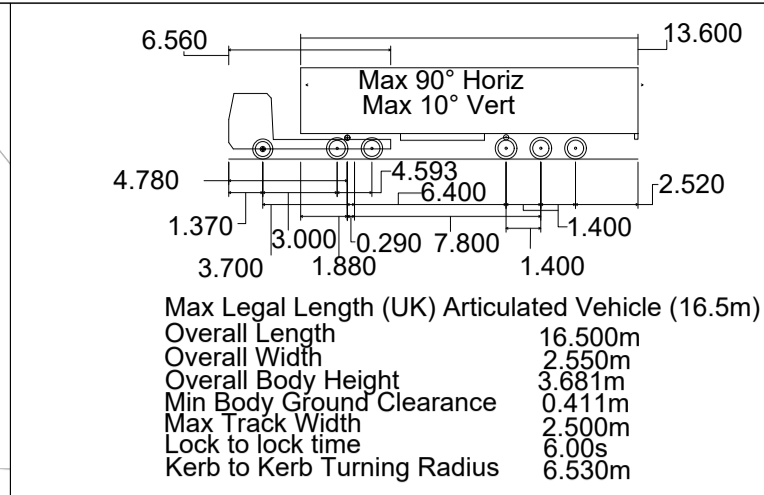
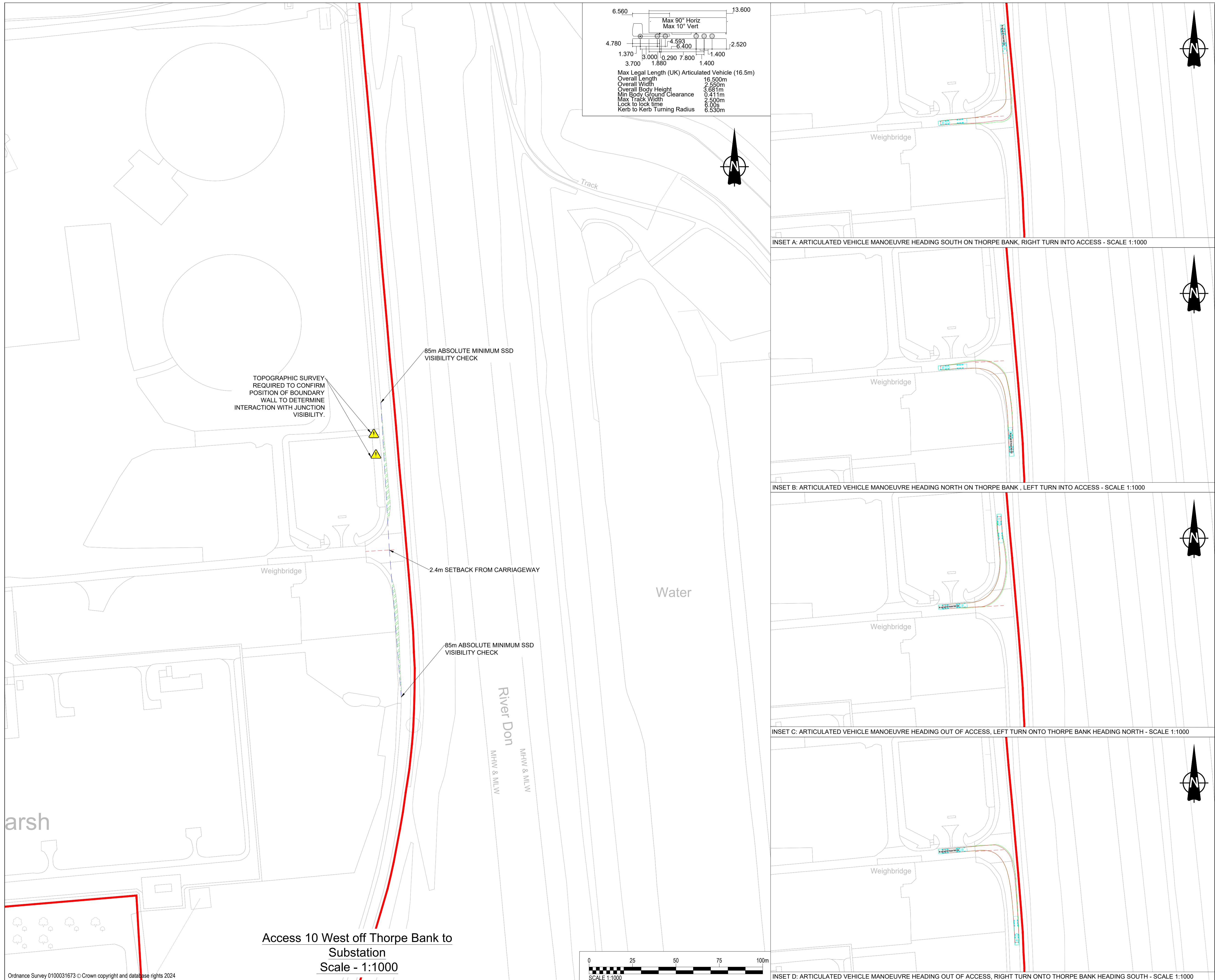
60698207

**SHEET TITLE**

ACCESS 10 WEST OFF THORPE BANK TO SUBSTATION LAYOUT AND SWEEP PATH ANALYSIS

**SHEET NUMBER**

60698207-ACM-HGN-00-DR-CE-1010

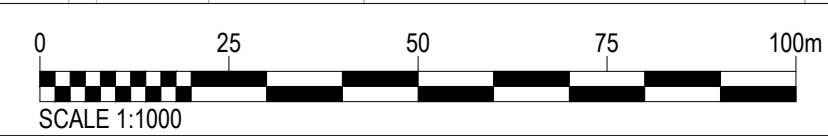


INSET A: ARTICULATED VEHICLE MANOEUVRE HEADING SOUTH ON THORPE BANK, RIGHT TURN INTO ACCESS - SCALE 1:1000

INSET B: ARTICULATED VEHICLE MANOEUVRE HEADING NORTH ON THORPE BANK, LEFT TURN INTO ACCESS - SCALE 1:1000

INSET C: ARTICULATED VEHICLE MANOEUVRE HEADING OUT OF ACCESS, LEFT TURN ONTO THORPE BANK HEADING NORTH - SCALE 1:1000

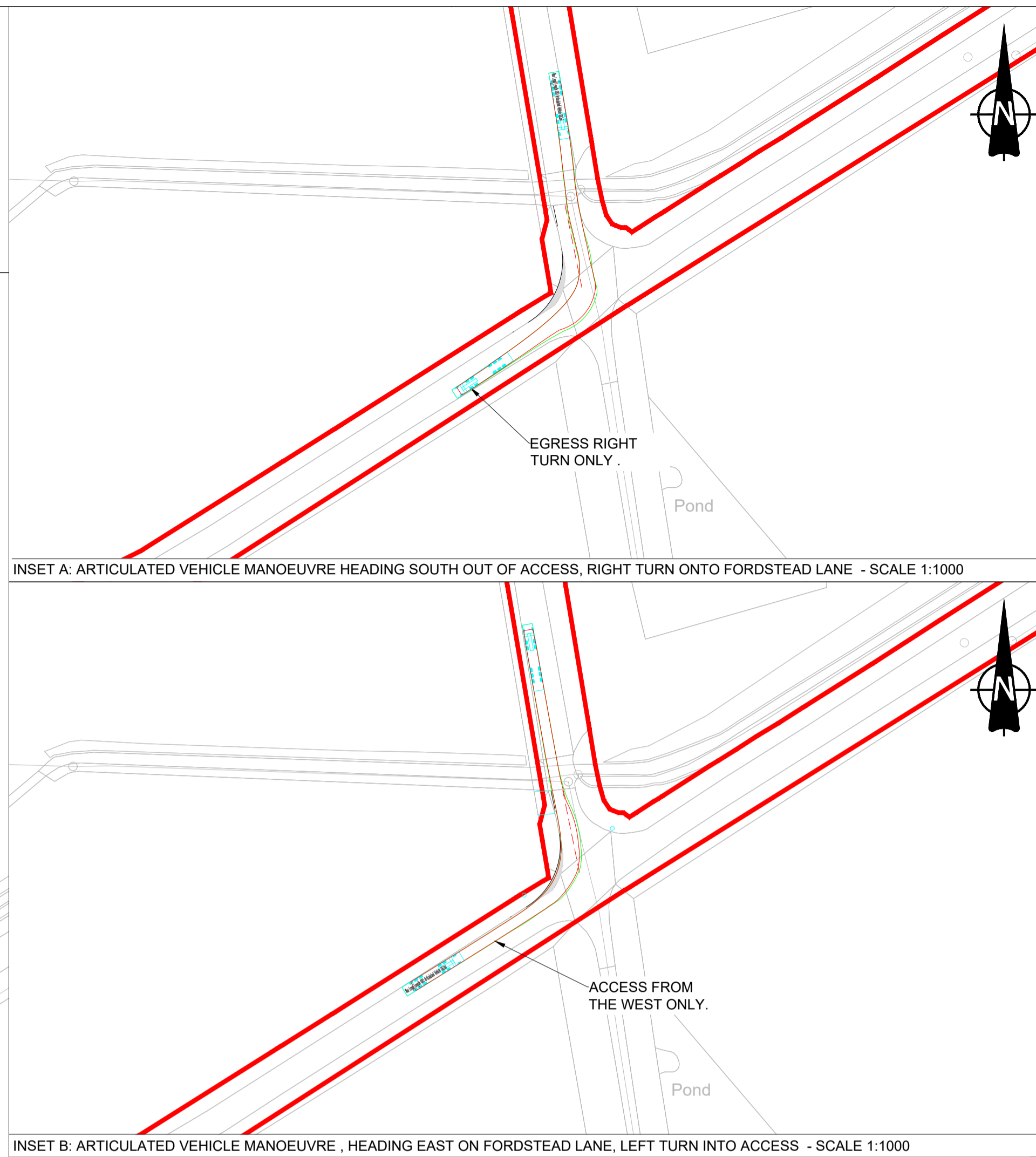
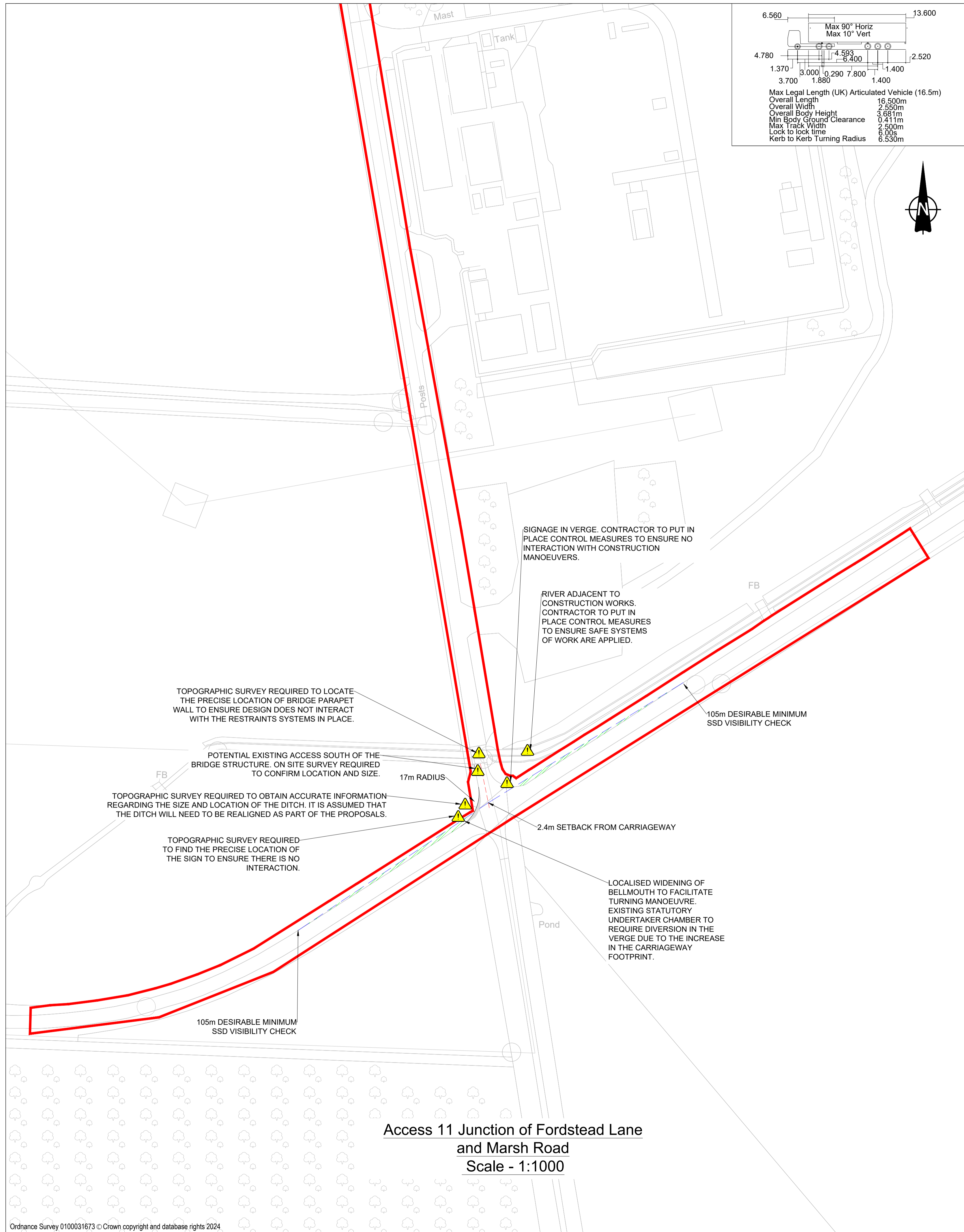
INSET D: ARTICULATED VEHICLE MANOEUVRE HEADING OUT OF ACCESS, RIGHT TURN ONTO THORPE BANK HEADING SOUTH - SCALE 1:1000



Access 10 West off Thorpe Bank to Substation  
 Scale - 1:1000

This drawing has been prepared for the use of AECOM's client. It may not be used, modified, reproduced or relied upon by third parties, except as agreed by AECOM or as required by law. AECOM accepts no responsibility, and denies any liability whatsoever, to any party that uses or relies on this drawing without AECOM's express written consent. Do not scale this document.





**PROJECT**

Fenwick Solar Farm

**CLIENT**

Fenwick Solar Project Limited

**CONSULTANT**

AECOM  
 Saxon House, 27 Duke Street  
 Chelmsford, Essex, CM1 1HT  
 01245 771200 tel 01245 476121 fax  
 www.aecom.com

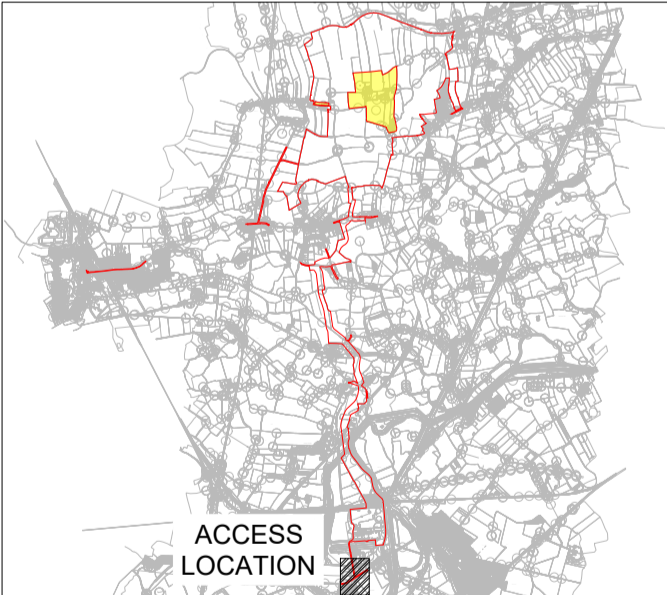
**GENERAL NOTES**

- This drawing is to be read in conjunction with all other relevant documentation.
- Do not scale from this drawing, use only printed dimensions.
- All dimensions in meters, all chainages, levels and coordinates are in meters unless defined otherwise.
- This Drawing is to be read in conjunction with the project health & Safety File for any identified potential risks.
- Vegetation to be removed denotes any vegetation features (such as hedgerows) that need to be removed to provide the required junction visibility. Any verge grassland is not to be removed but managed by the relevant maintainer to a low height so as to not impact upon junction visibility.
- Junction visibility for the access is based upon visibility parameters derived using 85th percentile speed survey received on the 20th March 2024.

**KEY**

- Extent of Access Footprint
- Order limits
- Existing Public Rights of Way
- Vehicle body
- Vehicle body path
- Vehicle load
- Vehicle load path
- Vehicle wheels path
- Edge of road
- Land not included in the Order Limits
- Junction Visibility
- Vegetation Management for Vis splay
- Hedgerow Removal for Vis Splay
- Hedgerow Removal for Bellmouth Access

**SHEET PLAN**



**ISSUE/REVISION**

NO	DATE	DESCRIPTION
P02	11/10/2024	DCO Issue
P01	02/05/2024	FIRST VERSION
I/R	DATE	DESCRIPTION

**PROJECT NUMBER**

60698207

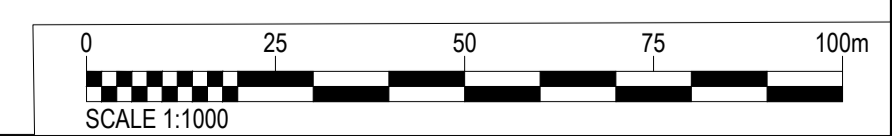
**SHEET TITLE**

ACCESS 11 JUNCTION OF FORDSTEAD LANE AND MARSH ROAD LAYOUT AND SWEEP PATH ANALYSIS

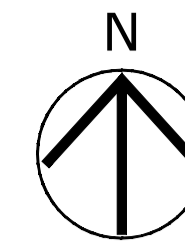
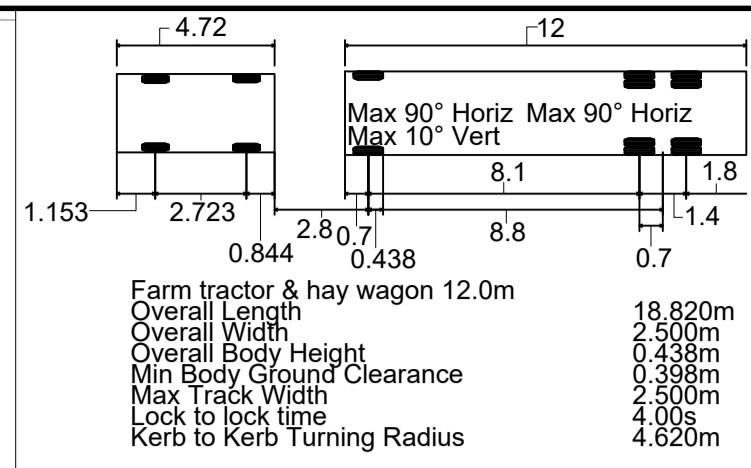
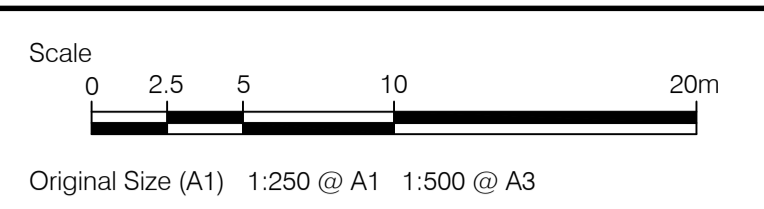
**SHEET NUMBER**

60698207-ACM-HGN-00-DR-CE-1011

**Access 11 Junction of Fordstead Lane and Marsh Road**  
 Scale - 1:1000



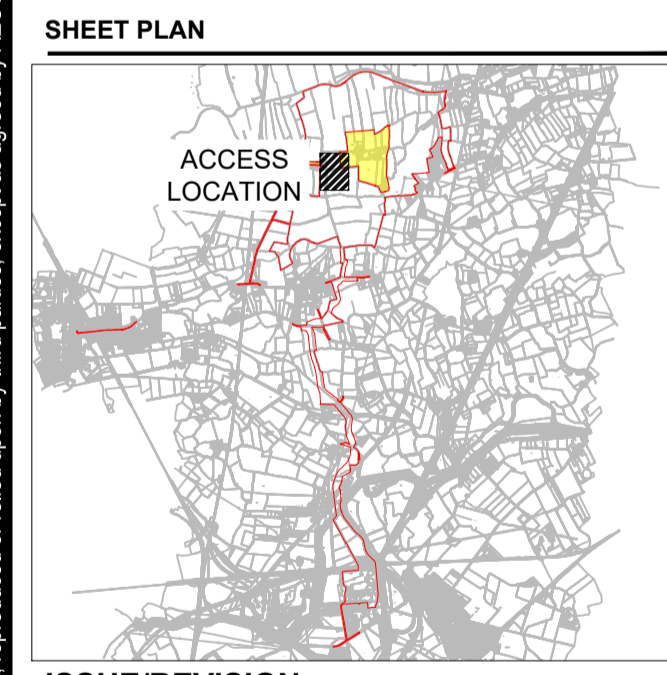
This drawing has been prepared for the use of AECOM's client. It may not be used, modified, reproduced or relied upon by third parties, except as agreed by AECOM or as required by law. AECOM accepts no responsibility, and denies any liability whatsoever, to any party that uses or relies on this drawing without AECOM's express written consent. Do not scale this document.



- CONSULTANT**
1. This drawing is to be read in conjunction with all other relevant documentation.
  2. Do not scale from this drawing, use only printed dimensions.
  3. All dimensions in meters, all chainages, levels and coordinates are in meters unless defined otherwise.
  4. This Drawing is to be read in conjunction with the project health & Safety File for any identified potential risks.
  5. Access and egress for construction vehicles between access 12 and 13 to be controlled by traffic management measures to ensure access and egress movements do not interact with limited local traffic movements on Lawn Lane east of Fenwick.

**KEY**

- Extent of Access Footprint
- Order Limits
- Existing Public Rights of Way
- Vehicle body
- Vehicle body path
- Vehicle load
- Vehicle load path
- Vehicle wheels path
- Edge of road
- Land not included in the Order Limits
- Wall Removal for Bellmouth Access
- Root protection area
- Verge protection mats



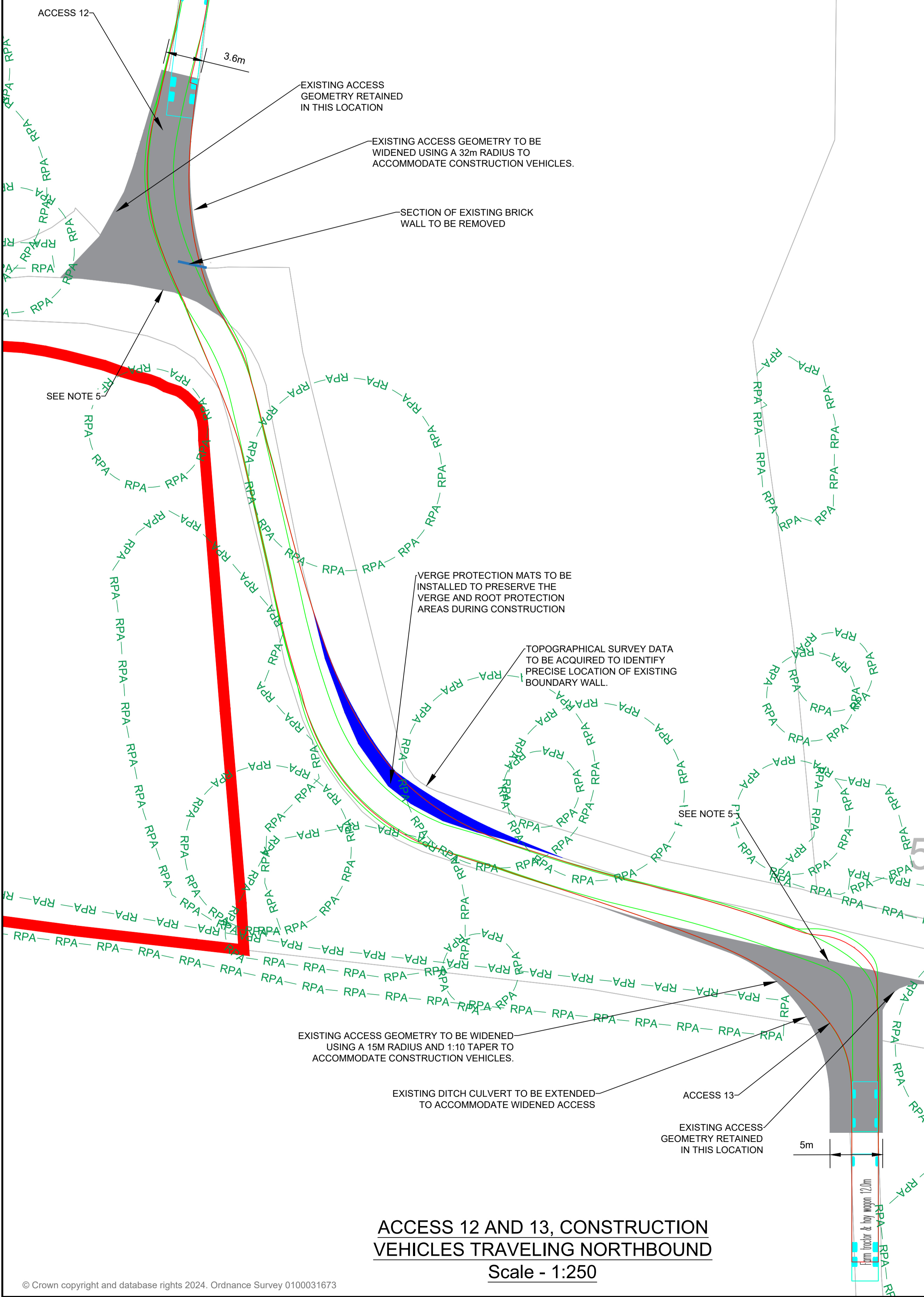
**ISSUE/REVISION**

NO	DATE	DESCRIPTION
P01	27/09/2024	FIRST VERSION

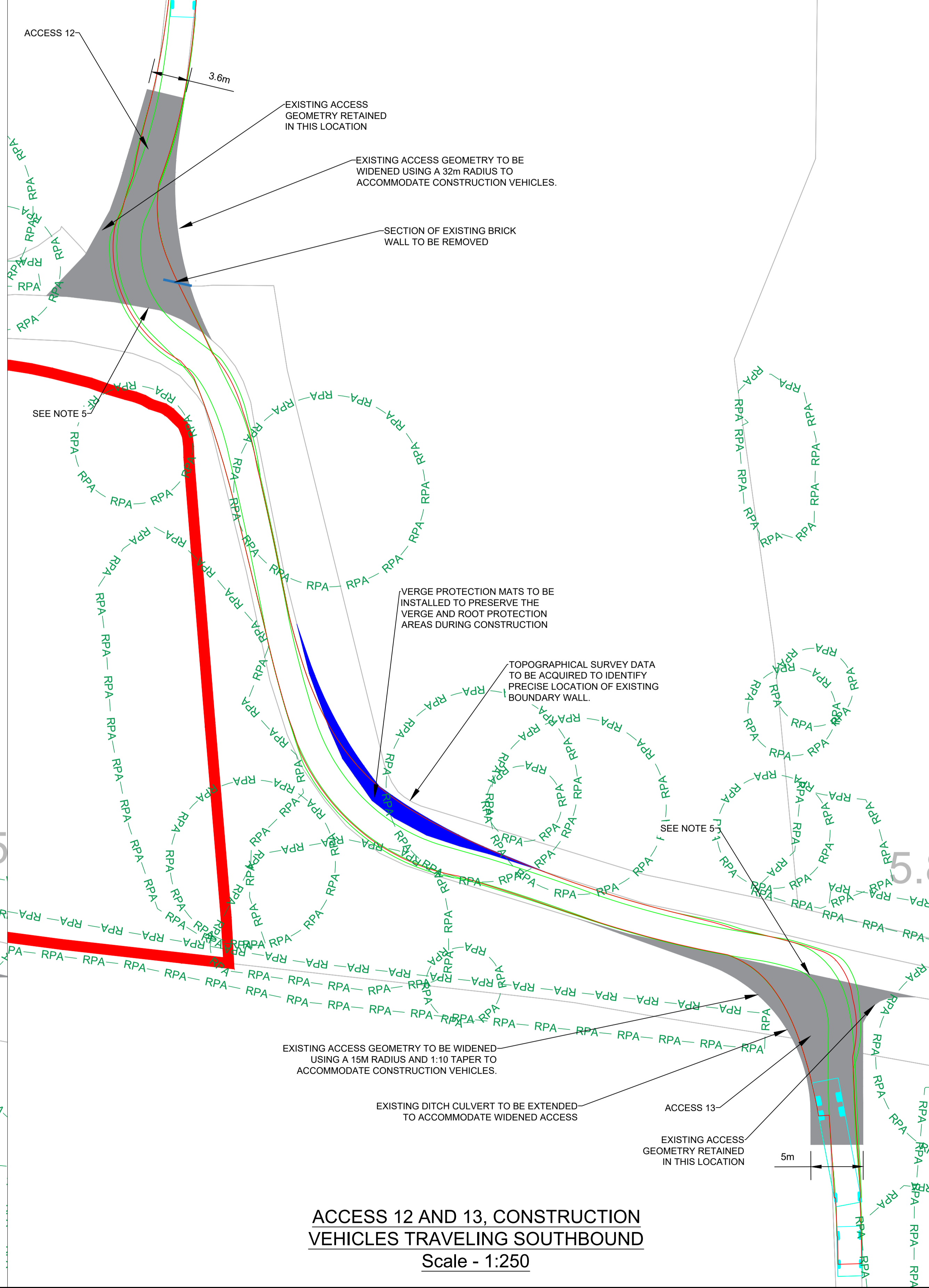
**PROJECT NUMBER**  
60698207

**SHEET TITLE**  
ACCESS 12 & 13 OFF OF LAWN LANE LAYOUT AND SWEEP PATH ANALYSIS

**SHEET NUMBER**  
60698207-ACM-HGN-00-DR-CE-1012



**ACCESS 12 AND 13, CONSTRUCTION VEHICLES TRAVELING NORTHBOUND**  
Scale - 1:250



**ACCESS 12 AND 13, CONSTRUCTION VEHICLES TRAVELING SOUTHBOUND**  
Scale - 1:250

An aerial photograph of a vast solar farm at sunset. The rows of solar panels stretch across the landscape, creating a strong sense of perspective. The sky is a deep, dark orange, and the sun is low on the horizon, casting long, soft shadows across the panels.

**BOOM**  
POWER

**BUILD | OWN | OPERATE | MAINTAIN**

**BOOM-POWER.CO.UK**